



# RAGA BLOCK TYPE MANIFOLD

Made up of single block corrosion resistance material making it more durable

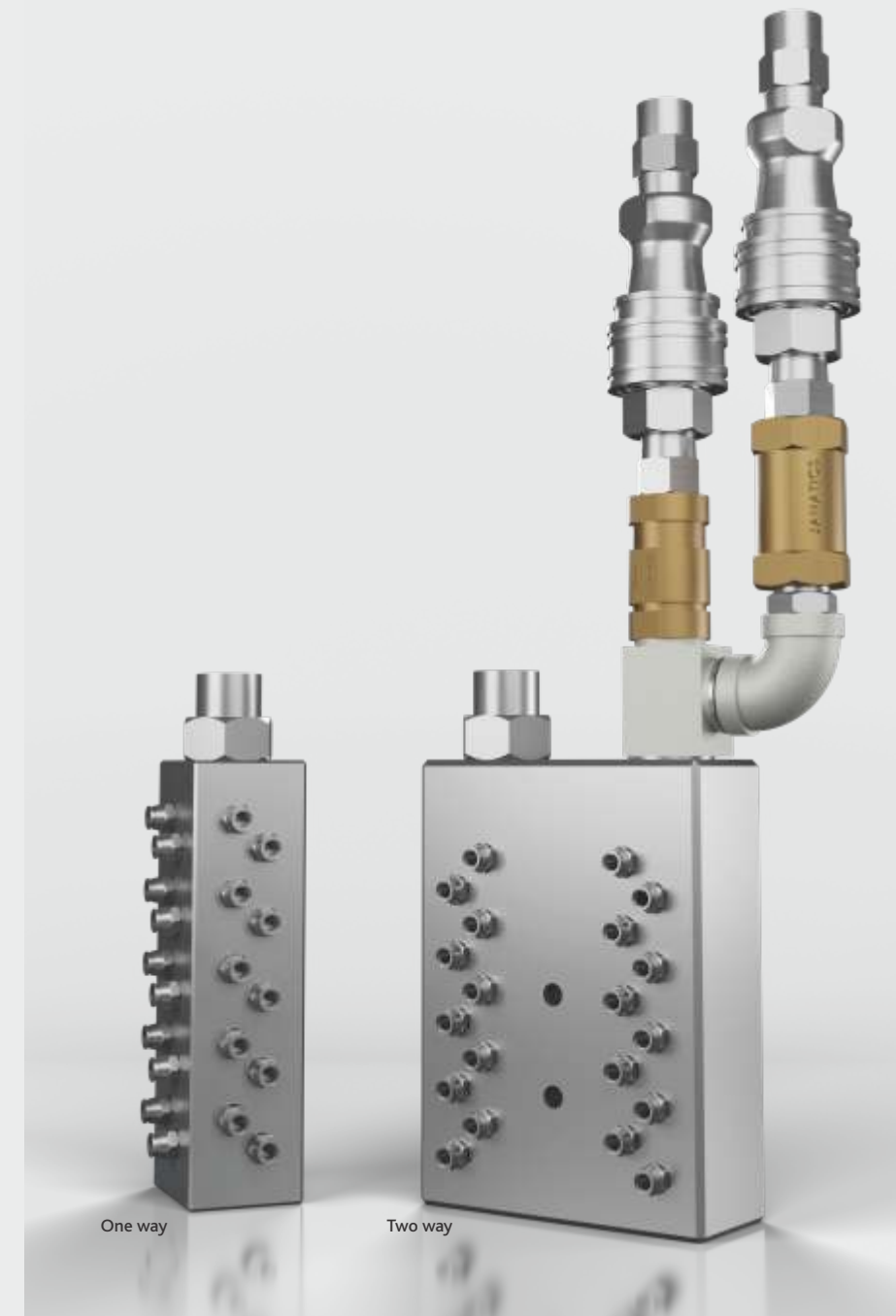
Connects all incoming or / and outgoing cooling tubes at one junction

Block type manifold - One way connects inlet supply & distributes to jet coolers

Block type manifold - Two way connects inlet & outlet supply to & from jet coolers

Long life & easy to install

	RAGA Block Type Manifold One way 10		RAGA Block Type Manifold One way 20		RAGA Block Type Manifold Two way 10		RAGA Block Type Manifold Two way 20	
Nos of tube connection	10		20		10+10	10+10	20+20	20+20
Tube thread size (Rc)	1/8	1/4	1/8	1/4	1/8	1/4	1/8	1/4
Main connection thread size (Rc)	1/2	3/4	3/4	1	1/2	3/4	3/4	1
Dimension HxWxD (mm)	140x40x40		140x50x50		140x100x40		140x100x40	
Separately available								
Fluide diverting joint	FDJ-012	FDJ-034	FDJ-034	FDJ-010	FDJ-012	FDJ-034	FDJ-034	FDJ-010
Recommended main connection	HAM-012	HAM-034	HAM-034	HAM-010	HAM-012	HAM-034	HAM-034	HAM-010
Recommended one touch fitting	A-01	A-02	A-01	A-02	A-01	A-02	A-01	A-02
Recommended flurotube	FPT-04-2.5 FPT-06-04 FPT-06-08		FPT-04-2.5 FPT-06-04 FPT-06-08		FPT-04-2.5 FPT-06-04 FPT-06-08		FPT-04-2.5 FPT-06-04 FPT-06-08	
Mounting bracket	BTM-MB-01		BTM-MB-01		BTM-MB-01		BTM-MB-01	



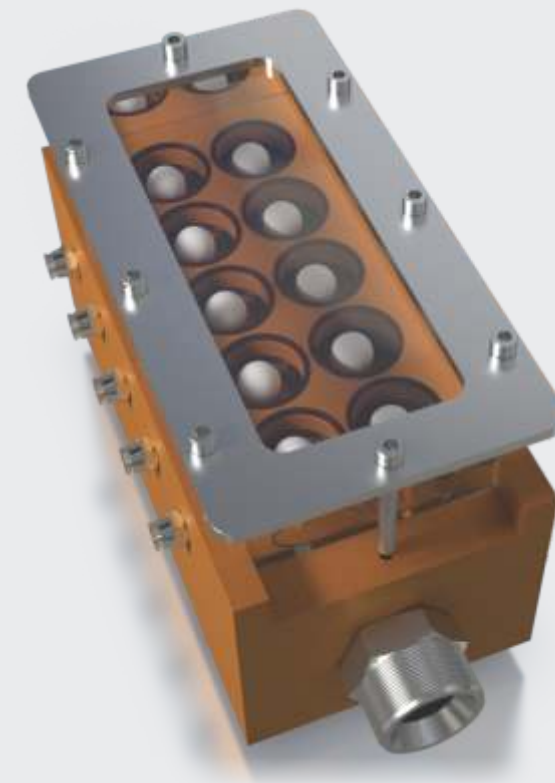
# RAGA VISUAL FLOW MANIFOLD

Spot blockage or breakage of core pins visually

Rolling balls indicate flow of water  
& abnormality if any

Connects outlet of jet coolers to drain hose

Simple & effective solution



	RAGA Visual Flow Manifold- 2	RAGA Visual Flow Manifold- 8	RAGA Visual Flow Manifold- 10	RAGA Visual Flow Manifold- 16
<b>Nos of tube connection</b>	2	8	10	16
<b>Tube thread size (Rc)</b>	1/8	1/8	1/8	1/8
<b>Main connection thread size (Rc)</b>	3/4	3/4	3/4	3/4
<b>Working water flow rate (lpm)</b>	0.5-1.8	0.5-1.8	1.2-6	1.2-6
<b>Working pressure (Bar)</b>	7	7	7	7
<b>Breaking pressure (Bar)</b>	20	20	20	20
<b>Maximum working Temp. °C</b>	100	100	100	100
<b>Dimensions HxWxD (mm)</b>	60 x75x 87	130x75x87	153x75x87	278x75x87
<b>Consumables</b>	O-ring - VFM-O-01 Nylon Ball- VFM-B-01 Acrylic Board- VFM-AB-02	O-ring - VFM-O-01 Nylon Ball- VFM-B-01 Acrylic Board- VFM-AB-08	O-ring - VFM-O-01 Nylon Ball- VFM-B-01 Acrylic Board- VFM-AB-10	O-ring - VFM-O-01 Nylon Ball- VFM-B-01 Acrylic Board- VFM-AB-16
<b>Separately available</b>				
<b>Adopter for main connection</b>	HAM-034	HAM-034	HAM-034	HAM-034
<b>One touch fitting for tube connection</b>	A-01	A-01	A-01	A-01
<b>Recommended flurotube</b>	FPT-04-2.5 FPT-06-04 FPT-06-08	FPT-04-2.5 FPT-06-04 FPT-06-08	FPT-04-2.5 FPT-06-04 FPT-06-08	FPT-04-2.5 FPT-06-04 FPT-06-08
<b>Mounting bracket</b>	VFM-MB-01	VFM-MB-01	VFM-MB-01	VFM-MB-01

# RAGA PIN BREAKAGE DETECTION DEVICE

Prevents accidents by detecting breakage of core pin  
or cooling channel after every shot

Stops jet cooling operation if abnormality found

Sturdy & easy to install

Integrable with existing jet cooling machine

	RAGA Pin Breakage Detecting Device-04	RAGA Pin Breakage Detecting Device-10
Nos of connection	4	10
Connection thread size (Rc)	1/4	1/4
Maximum working pressure (bar)	20	20
Dimension HxWxD (mm)	400x200x175	530x200x175
Power supply DC (V)	24	24
Consumables	O-ring - VFM-O-01 Nylon Ball- VFM-B-01 Acrylic Board- VFM-AB-02	O-ring - VFM-O-01 Nylon Ball- VFM-B-01 Acrylic Board- VFM-AB-08
Separately available		
One touch fitting for tube connection	A-01	A-01
Recommended flurotube	FPT-04-2.5 FPT-06-04 FPT-06-08	FPT-04-2.5 FPT-06-04 FPT-06-08



# RAGA FLOW SENSING DEVICE

Prevents accidents due to spillage of  
water into molten aluminum

Senses real time water flow abnormality  
on each cooling line

Safeguards your jet cooling operation

Saves cost by reducing rejections

Proven & trusted digital technology

	RAGA Flow Sensing Device-03	RAGA Flow Sensing Device-08
Nos of connection	3	8
Connection thread size (Rc)	1/4	1/4
Maximum working pressure (bar)	20	20
Minimum detective flow rate (lpm)	0.5	0.5
Maximum working temp. (°C)	100	100
Dimension HxWxD (mm)	408x350x200	408x370x215
Power supply DC (V)	24	24
Output type	Digital pulse signal	Digital pulse signal
Separately available		
One touch fitting for tube connection	A-01	A-01
Recommended flurotube	FPT-04-2.5 FPT-06-04 FPT-06-08	FPT-04-2.5 FPT-06-04 FPT-06-08



# RAGA FLOW INDICATION DEVICE

Generates alarm if there is any blockage or breakage of core pins.

Receives signal from Flow sensing device.

Conforms with international standards & spares

Trouble-free & cost-effective solution for existing jet cooling operations

	RAGA Flow Indicator Device-3	RAGA Flow Indicator Device-8
Flow lamp for nos of connection	3	8
Power supply DC (V)	24	24
Max. power consumption (w)	5.4	6.9
Abnormal water flow	Warning light with buzzer	Warning light with buzzer
Dimension HxWxD (mm)	270x225x65	405x225x165



# RAGA WATER FILTER

Improve life of your equipment,  
core pins & jet coolers

Attached to inlet of jet cooling machine or water softener

Blocks dirt, sand & slime & prevents clogging

Back-washable self cleaning water filter is  
easy to use and maintain

	RAGA Water Filter -P					RAGA Water Filter -A				
Tube connection (Rc)	3/4	1	1 1/4	1 1/2	2	3/4	1	1 1/4	1 1/2	2
Max. flow rate (lpm)	66	75	91	266	283	66	75	91	266	283
Cleaning method	Auto by top cap rotate					Auto by time setting				
Power supply	NA					Single Phase AC 220 V				



Water Filter -A

Water Filter -P

# RAGA WATER SOFTENER

Improve life of core pins, cooling channels & jet coolers

Blocks calcium & magnesium from tap & industrial water

Prevents adhesion & on water flowing surface

Modular design, high resin life & with fully automated option

	RAGA Water Softner with Seprate Brained Tank		RAGA Water Softner Close Unit
Max. flow rate	28	56	48
Tube connection (Rc)	1	1	3/4
Resin tank size (Ltr)	28	42	24
Salt supply tank content (Kg)	100	100	60
Salt use for each regeneration (Kg)	4	5.2	4
Max. water temp(°C)	37		37
Regeneration time (Min)	90		90
Dimension HxWxD (mm)	870x380x370		483x483x1123



Softner With Brained Tank

Softner Close Unit



# SEPARATELY AVAILABLE

Item Name	Ordering Code	Image	Desiprcation	MOQ.
One touch fitting	A-01-04		For Ø4 mm hose Pipe & Rc 1/8 spot cooler thread.	10 No's
	A-01-06		For Ø6 mm hose Pipe & Rc 1/8 spot cooler thread.	10 No's
	A-01-08		For Ø8 mm hose Pipe & Rc 1/8 spot cooler thread.	10 No's
	A-02-04		For Ø4 mm hose Pipe & Rc 1/4 spot cooler thread.	10 No's
	A-02-06		For Ø6 mm hose Pipe & Rc 1/4 spot cooler thread.	10 No's
	A-02-08		For Ø8 mm hose Pipe & Rc 1/4 spot cooler thread.	10 No's
Hose adapter male	HAM-014		Both side male thread Rc 1/4 "	10 No's
	HAM-038		Both side male thread Rc 3/8 "	10 No's
	HAM-012		Both side male thread Rc1/2 "	10 No's
	HAM-034		Both side male thread Rc 3/4 "	10 No's
	HAM-100		Both side male thread Rc 1 "	10 No's
	HAM-114		Both side male thread Rc 1 1/4 "	10 No's
Fluid diverting joint	FDJ-012 FDJ-034 FDJ-100		To use on Manifold for HVCU connection of water and Air purge for Hose size 1/2", 3/4", 1"	1No 1No 1No
Rubber hose Ø7mm	HB07		Outer Ø14.2 mm, Inner Ø7.1 mm	10 Mtrs
Copper pipe	COP-43		Outer Ø4 mm, ID-3MM	10 Mtrs
	COP-64		Outer Ø6 mm, ID-4MM	10 Mtrs
	COP-86		Outer Ø8 mm, ID-6MM	10 Mtrs
Fluoropoly tube	FPT-04-2.5-BL		Outer Ø4 mm and Inner Ø2.5 mm ; Color -Blue (translucent)	10 Mtrs
	FPT-04-2.5-RE		Outer Ø4 mm and Inner Ø2.5 mm ; Color -Red (translucent)	10 Mtrs
	FPT-04-2.5-BK		Outer Ø4 mm and Inner Ø2.5 mm ; Color -Black (translucent)	10 Mtrs
	FPT-06-4.0-BL		Outer Ø6 mm and Inner Ø4 mm ; Color -Blue (translucent)	10 Mtrs
	FPT-06-4.0-RE		Outer Ø6 mm and Inner Ø4 mm ; Color -Red (translucent)	10 Mtrs
	FPT-06-4.0-BK		Outer Ø6 mm and Inner Ø4 mm ; Color -Black (translucent)	10 Mtrs
	FPT-08-6.0-BL		Outer Ø8 mm and Inner Ø6 mm ; Color -Blue (translucent)	10 Mtrs
	FPT-08-6.0-RE		Outer Ø8 mm and Inner Ø6 mm ; Color -Red (translucent)	10 Mtrs
	FPT-08-6.0-BK		Outer Ø8 mm and Inner Ø6 mm ; Color -Black (translucent)	10 Mtrs
Mounting bracket 1	BTM-MB-01		For Block Type Manifold	1No
Mounting bracket 2	VFM-MB-01		For Visual Flow Manifold	1No
Revolving ball	VFM-MB-01		For Visual Flow Manifold	1No
O-ring	VFM-O-01		For Visual Flow Manifold Sealing	10 No's
Acrylic board	VFM-AB-02		For Visual Flow Manifold -02	1 No
	VFM-AB-08		For Visual Flow Manifold -08	1 No
	VFM-AB-10		For Visual Flow Manifold -10	1 No
	VFM-AB-16		For Visual Flow Manifold -16	1 No

## RAGA TECHNOLOGIES For Die Casting



RAGA NEX



RAGA UNO



RAGA TRIO

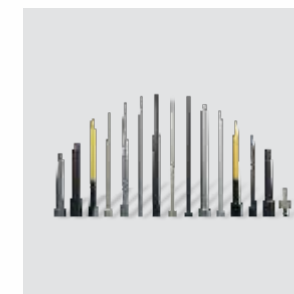


RAGA VACMAX



RAGA COMBO

## RAGA CONSUMABLES For Die Casting



RAGA CORE PIN



RAGA JET COOLED CORE PIN



RAGA JET COOLER



RAGA SPOT COOLER



RAGA CHILL VACCUM BLOCK



RAGA SHOT SLEEVE & PLUNGER TIP



RAGA SPRUE BUSH DIFFUSER